

# JBC

The Soldering Co.

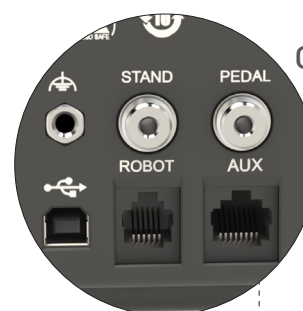
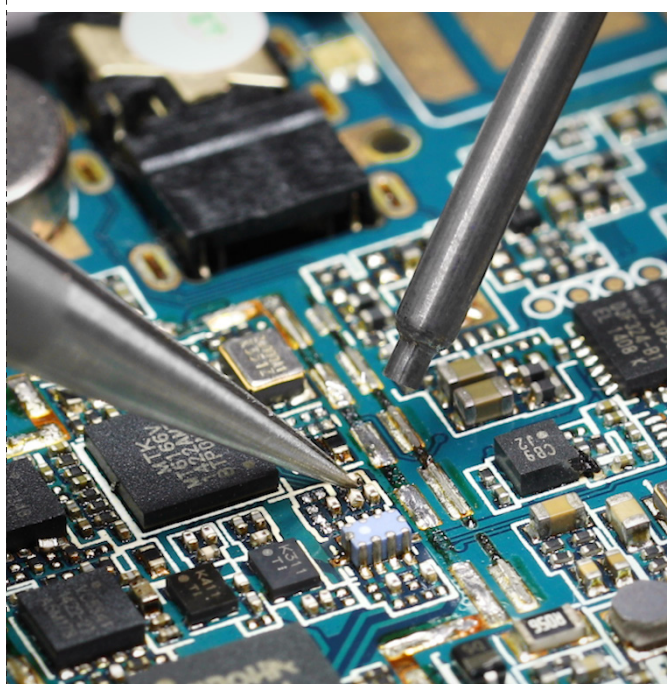


## JNA

High-Precision Hot Air Station

# JNA High-Precision Hot Air Station

- **Easy, high-precision reworking** of ultra-miniature components (as small as 01005) under the magnifying glass.
- **Precise control** of temperature and air flow.
- Pick & Place to **position and remove** components with high precision.



## Communication

Connect your station to a computer using a USB cable and get to control and trace your soldering production.

## Connectivity

Through JBC Software, JNA Hot Air Station can be synchronized with NAS Station and Preheaters for them to work together and to perform your work process optimally.

## Intuitive menu

JNA Station has an intuitive menu that allows **setting up the station parameters easily**.



## Auto-Stop Function

The auto-stop function is a safety measure which guarantees that the heat is automatically cut off when the tool is in the stand. **It is safer and more efficient.**

## Changing Heating Element

Save time and increase productivity by using NHS Stand, which facilitates **fast and safe use of the heating element**.

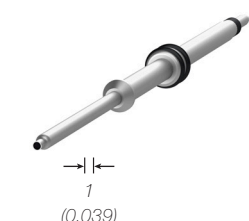


## Pick & Place

The station includes a Pick & Place functionality to position and remove components with **high precision**.

## Heating Element

J125010 Heating Element is perfect to rework the smallest SMDs from 0402 to SOIC-8 under the magnifying glass.



# A Complete Tooling Range

## NAS

### 2-Tool Nano Rework Station

The best solution for **soldering and rework of SMT components requiring the highest precision**. It works simultaneously with NT115 Nano Handle and AN115 Adjustable Nano Tweezers.

## RHT

### Rework Hand Support

An indispensable tool for precision work which **provides a point of support very close to the working zone, allowing the stabilization of the pulse rate**.

## JNA

### High-Precision Hot Air Station

JBC JNA is the only Hot Air Station to **rework, position and remove SMDs without affecting nearby components**, perfect for reworking SMDs on areas with minimal separation.



## DPM

### Manual Solder Paste Dispenser

Ergonomic Solder Paste Dispenser **ideal for SMT rework**. DPM is **compatible with a large variety of needles and tips** for the highest dispensing precision.

## PHNK

### Nano Preheater Set

It is the best solution for **rework on small PCBAs, such as the ones commonly used in smartphones**. It features a heating area of 108 x 70 mm / 4.25 x 2.75 in and two TC connections.

## Specifications

Dimensions	180 x 170 x 110 mm / 7.1 x 6.7 x 4.3 in	Ambient Operating Temp.	10 - 50 °C / 50 - 122 °F
Weight	1.35 Kg / 2.96 lb	Cool Mode	Temp. off. Used to blow air at room temperature
Ref. - Voltage (AC)	<b>JNASE-9A</b> - 100 V 50/60 Hz. Main fuse: T2A. Rated current 0.85A	Connectors	USB-A / USB-B
	<b>JNASE-1A</b> - 120 V 50/60 Hz. Main fuse: T2A. Rated current 0.85A		RJ12 for RS232
	<b>JNASE-2A</b> - 230 V 50/60 Hz. Main fuse: T2A. Rated current 0.85A		Pedal / Stand
Nominal power	70 W	Air Flow Regulation	0.15 - 2.5 SLPM
Temperature selection	Room temp. / 150 - 450 °C / 300 - 840 °F	Vacuum	53% / 397 mmHg / 15.6 inHg

